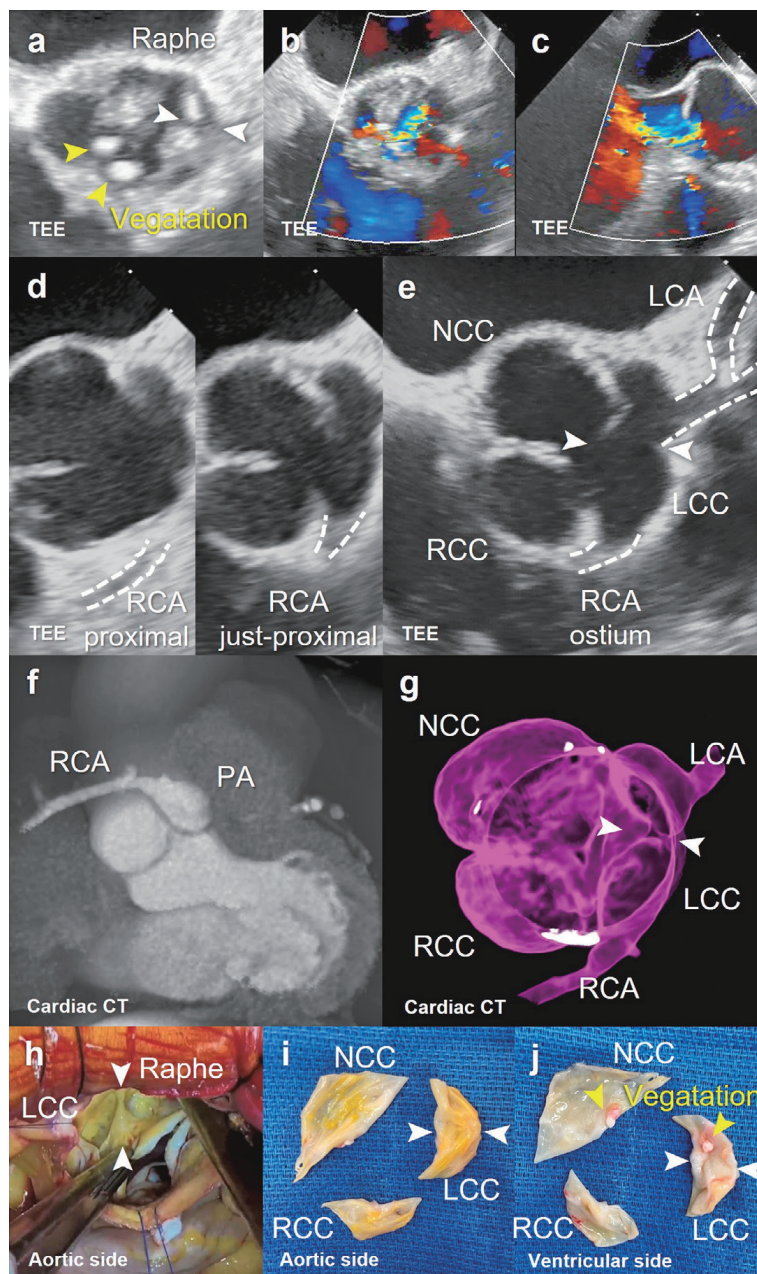


## 経食道心エコー図検査により大動脈四尖弁と冠動脈起始異常を同時に診断し得た感染性心内膜炎の1例

真鍋 恵理 関 庚徳 東 晃平 菅原 政貴 朝倉 正紀 石原 正治

**Fig. 1** a 疣腫と左冠尖の縫線. b,c 偏位する大動脈弁逆流. d-g 大動脈四尖弁と左冠動脈洞起始の右冠動脈. h 術中所見. i,j 肉眼的病理所見. 白矢頭は左冠尖の縫線, 黄矢頭は疣腫を指す (TEE: 経食道心エコー図, NCC: 無冠尖, RCC: 右冠尖, LCC: 左冠尖, RCA: 右冠動脈, LCA: 左冠動脈, PA: 肺動脈)



A case of infective endocarditis diagnosed simultaneously with quadricuspid aortic valve and anomalous origin of coronary artery by transesophageal echocardiography

Keywords: quadricuspid aortic valve, anomalous origin of coronary artery, infective endocarditis

兵庫医科大学循環器・腎透析内科学

Eri MANABE, Kyung-Duk MIN, Kohei AZUMA, Masataka SUGAHARA, SJSUM, Masanori ASAKURA, Masaharu ISHIHARA  
 Department of Cardiovascular and Renal Medicine, Hyogo Medical University, 1-1 Mukogawa, Nishinomiya, Hyogo 663-8501, Japan  
 Corresponding Author: Kyung-Duk MIN (kd-min@hyo-med.ac.jp)

Received on March 6, 2023; Revision accepted on April 27, 2023 J-STAGE. Advanced published. date: May 26, 2023